

PRESENT BY:  
AZZA & LIM

[HOME](#)

[SERVICE](#)

[ABOUT US](#)

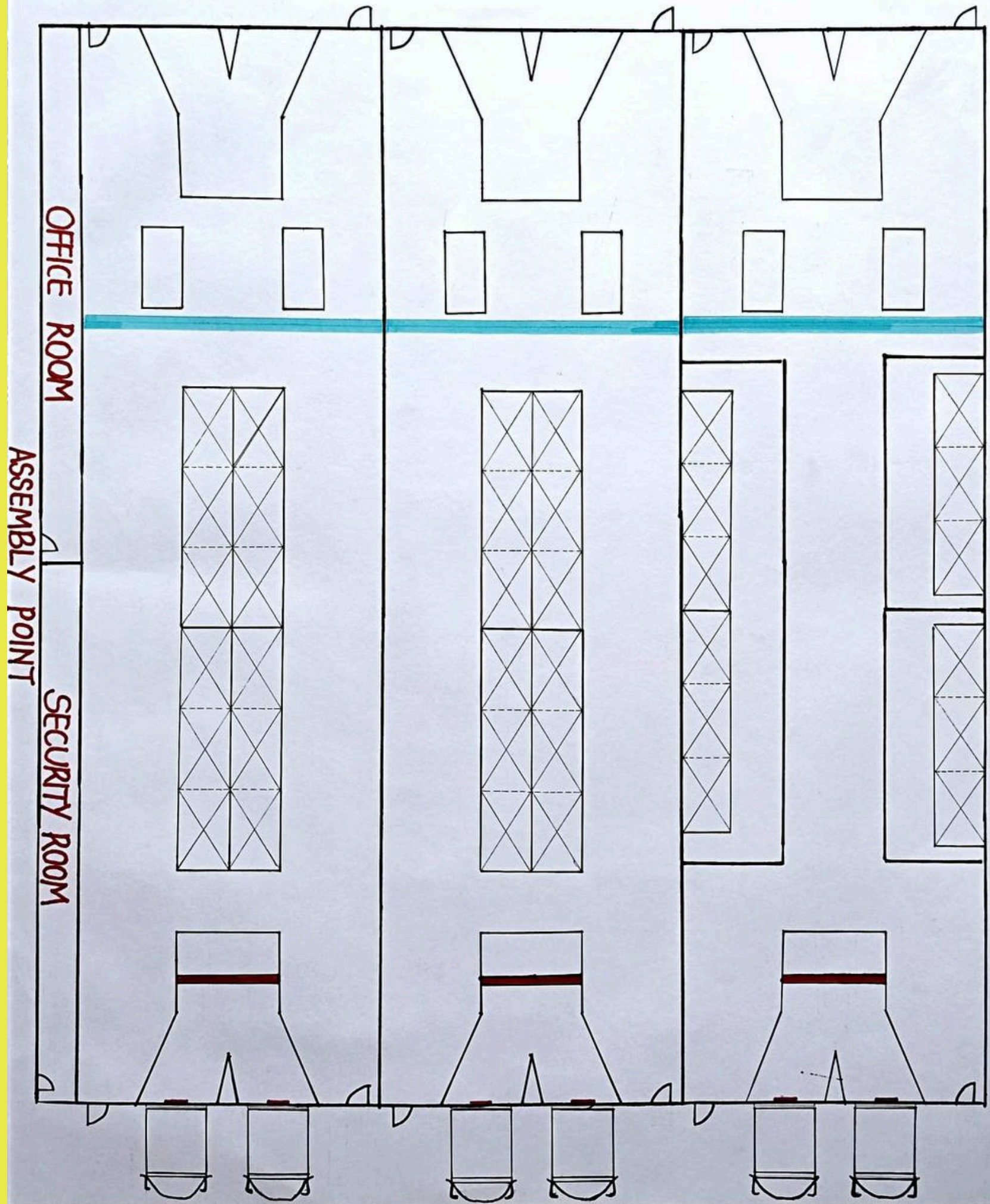
[CONTACT US](#)

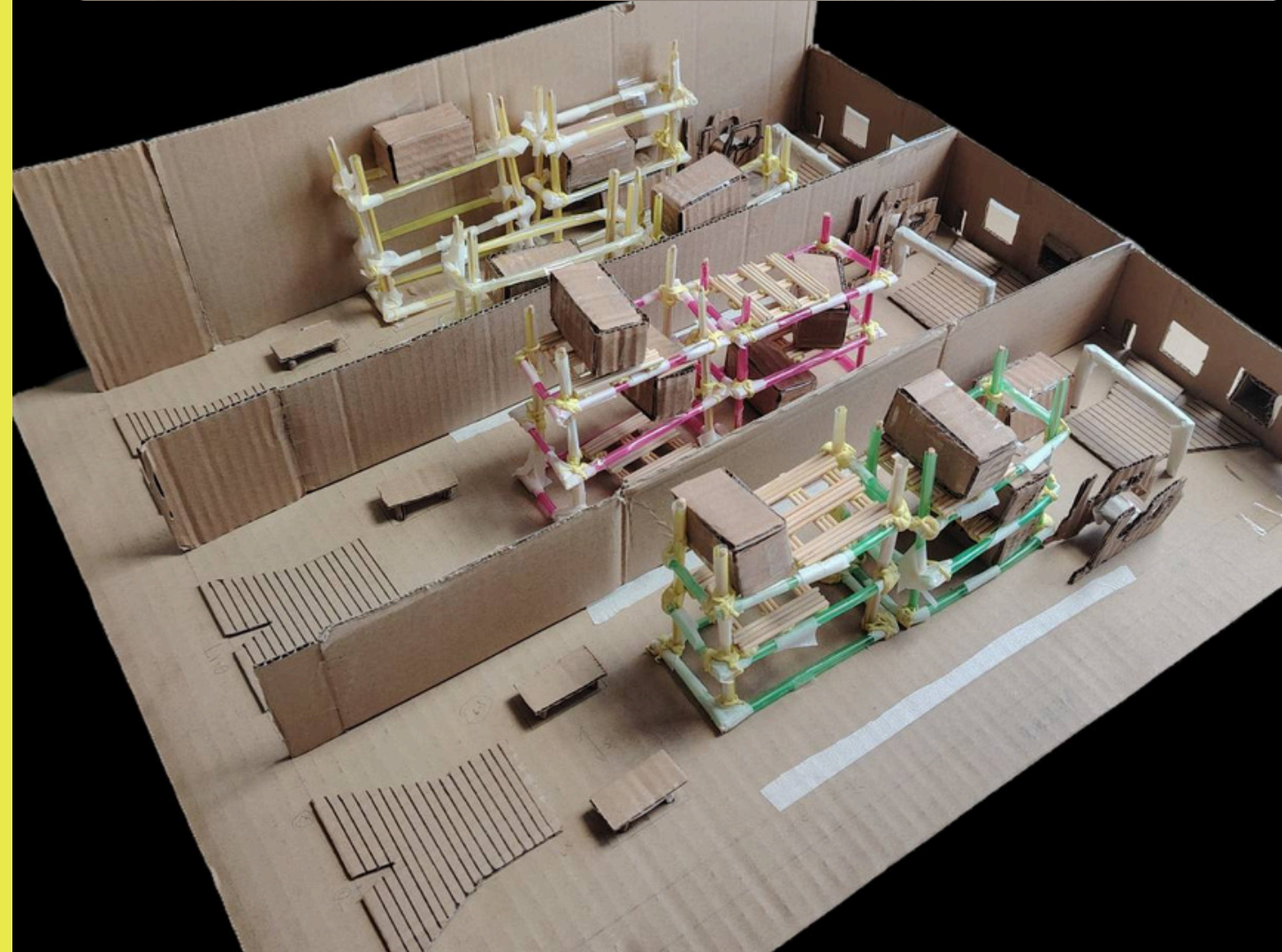
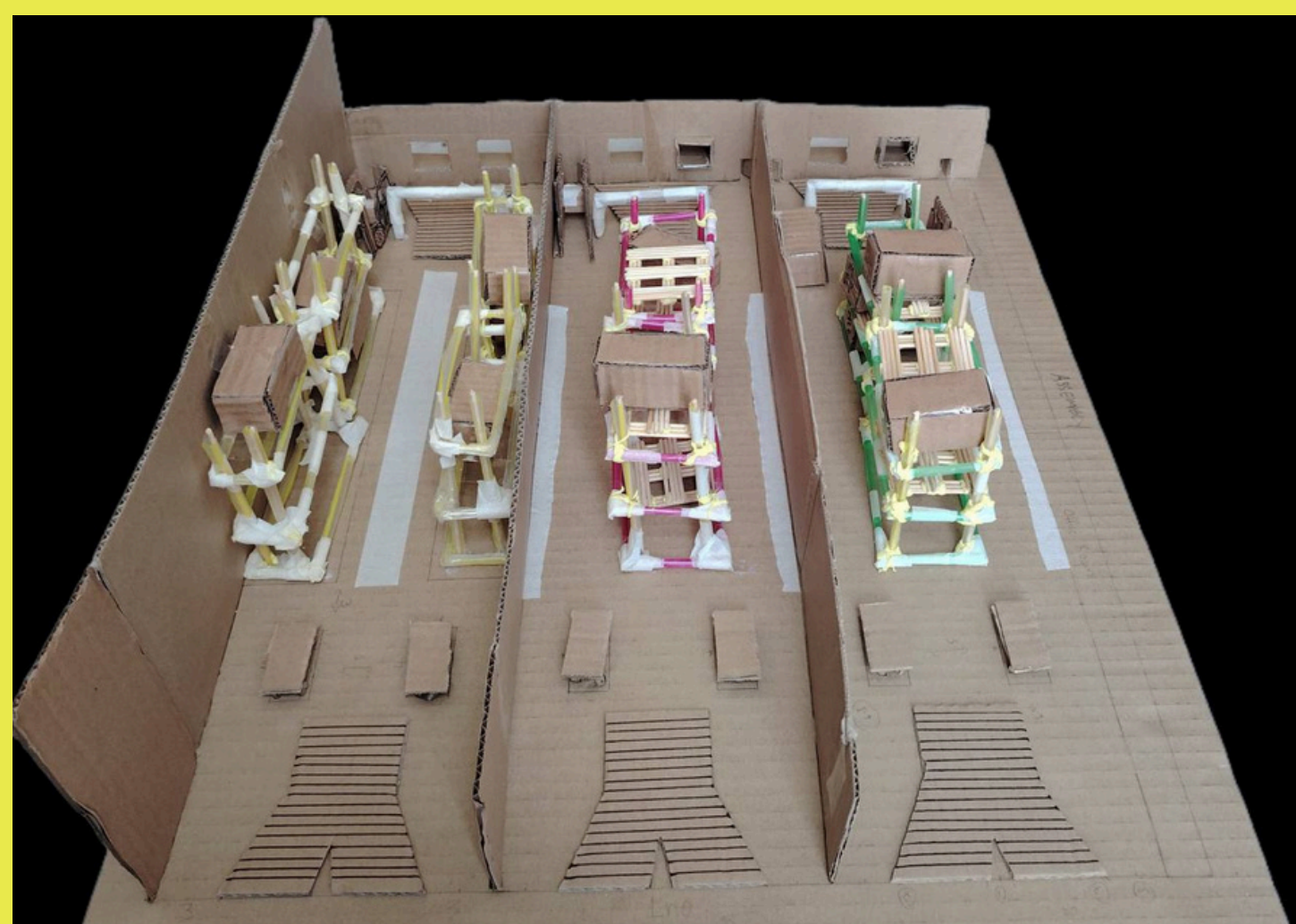


**GROUP 3**

# Logistic Warehouse Design







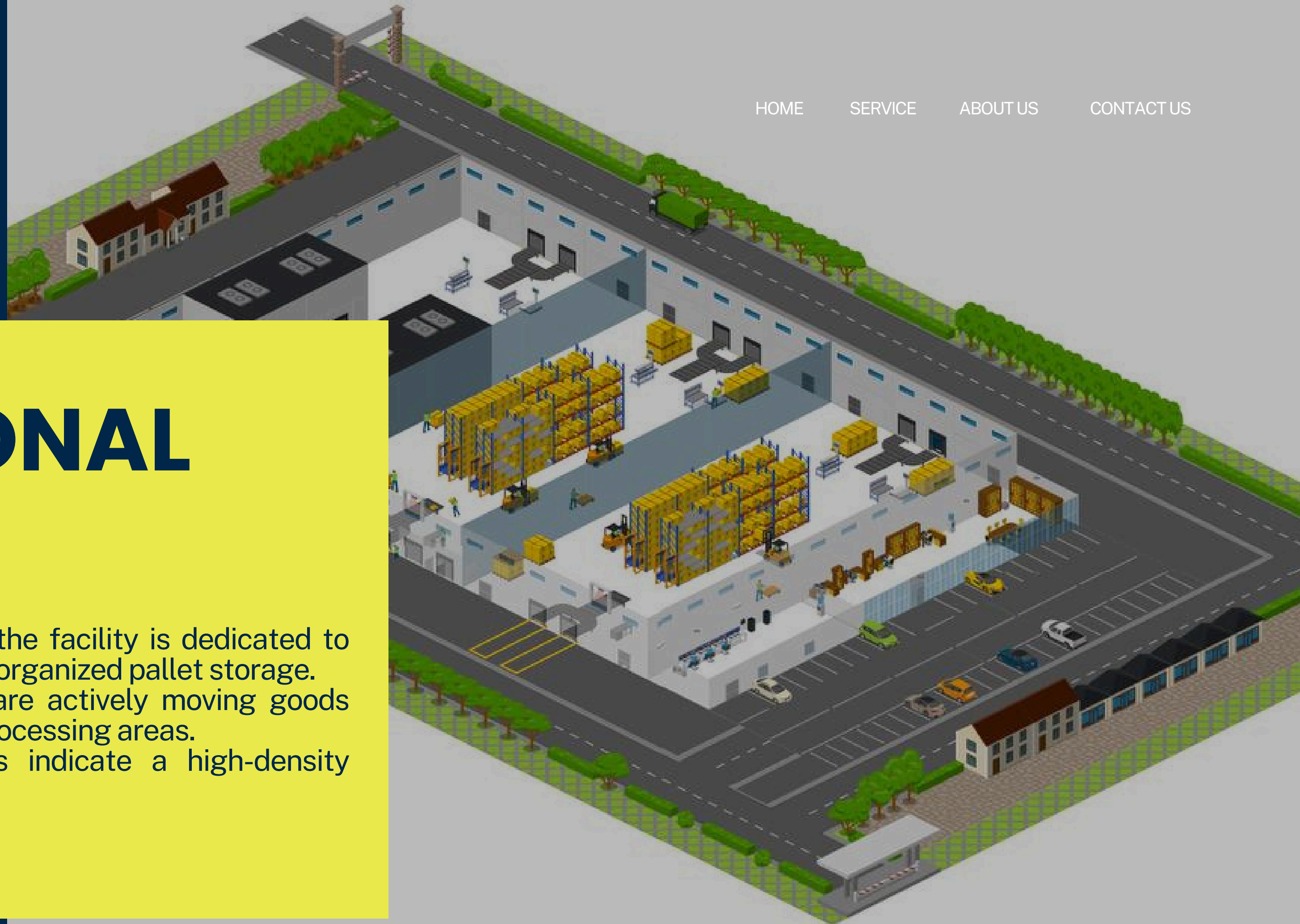




# FUNCTIONAL DESIGN

## Warehouse Storage Area

- The central section of the facility is dedicated to high-rack shelving with organized pallet storage.
- Forklifts and workers are actively moving goods between storage and processing areas.
- Multiple shelving units indicate a high-density storage solution.

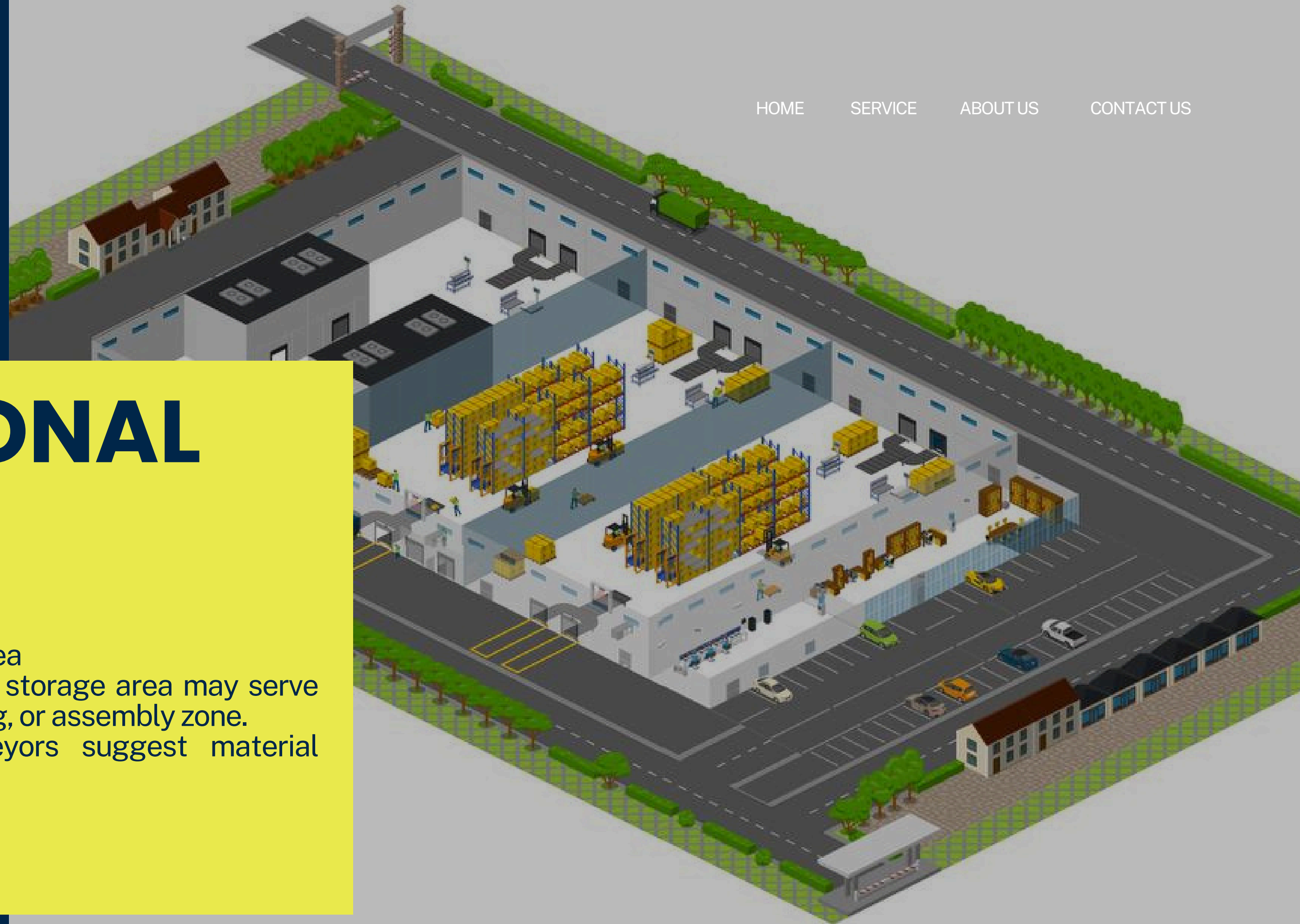




# FUNCTIONAL DESIGN

## Manufacturing/Processing Area

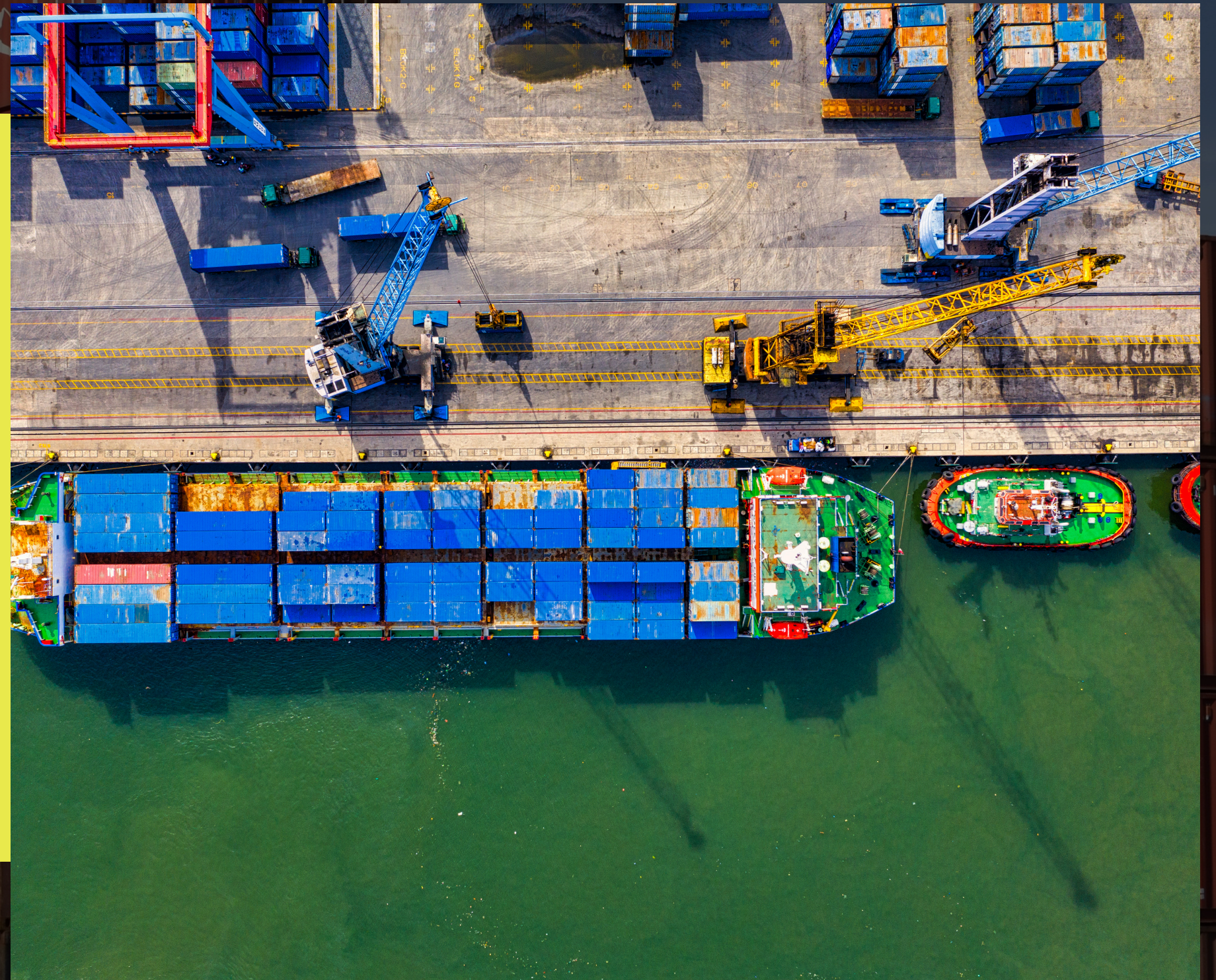
- A section adjacent to the storage area may serve as a processing, packaging, or assembly zone.
- Workstations and conveyors suggest material handling activities.





# SPACE UTILIZATION

- Optimized Storage: High-rack shelving maximizes vertical space for product storage.

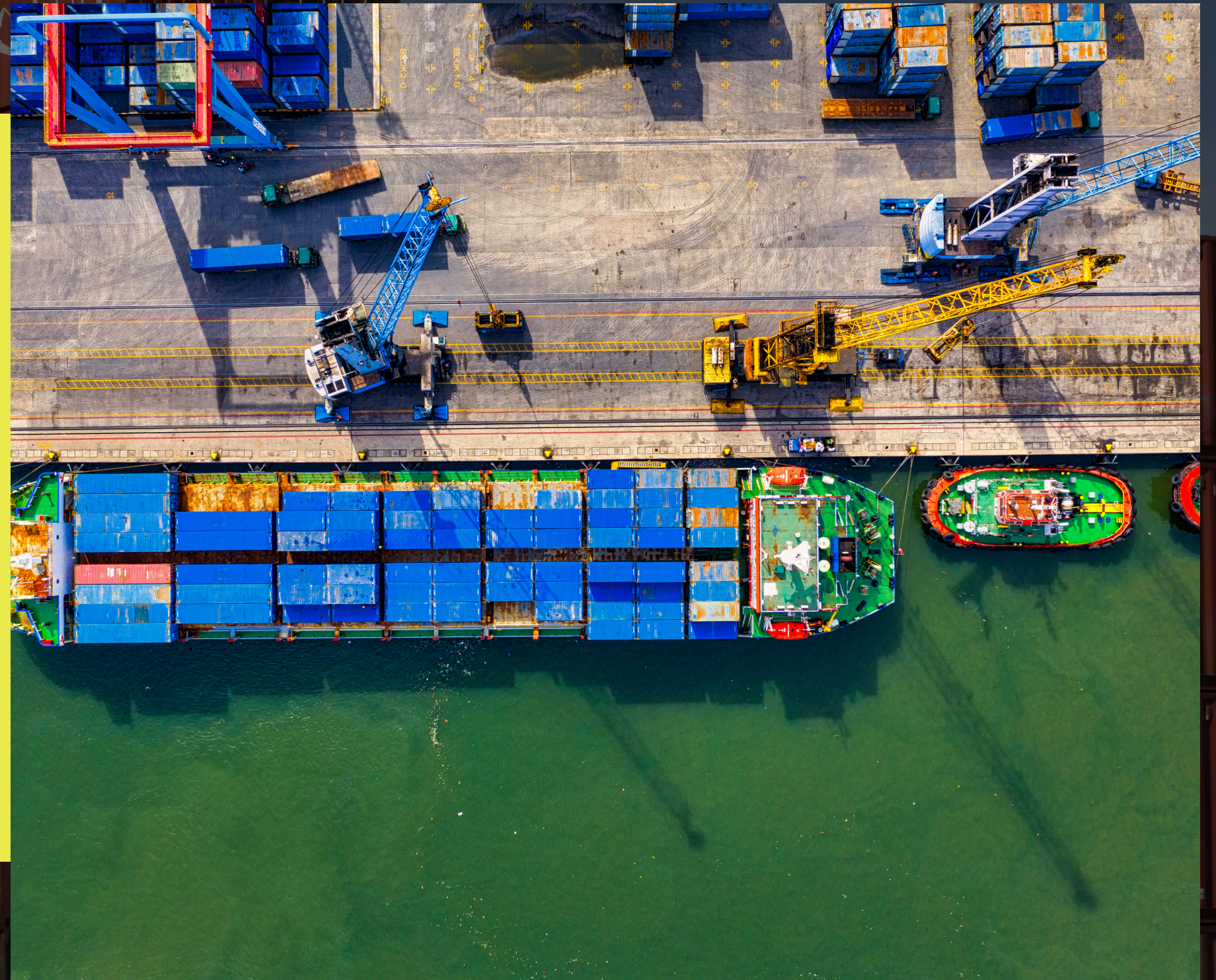


HYUNDAI



# SPACE UTILIZATION

- Efficient Workflow: Clear pathways for forklifts and workers ensure seamless goods movement.



HYUNDAI



# SAFETY & COMPLIANCE

- 1) Unflammable material for all places
- 2) CCTV human and motion sensors



# TECHNOLOGY INTEGRATION

## GOODS

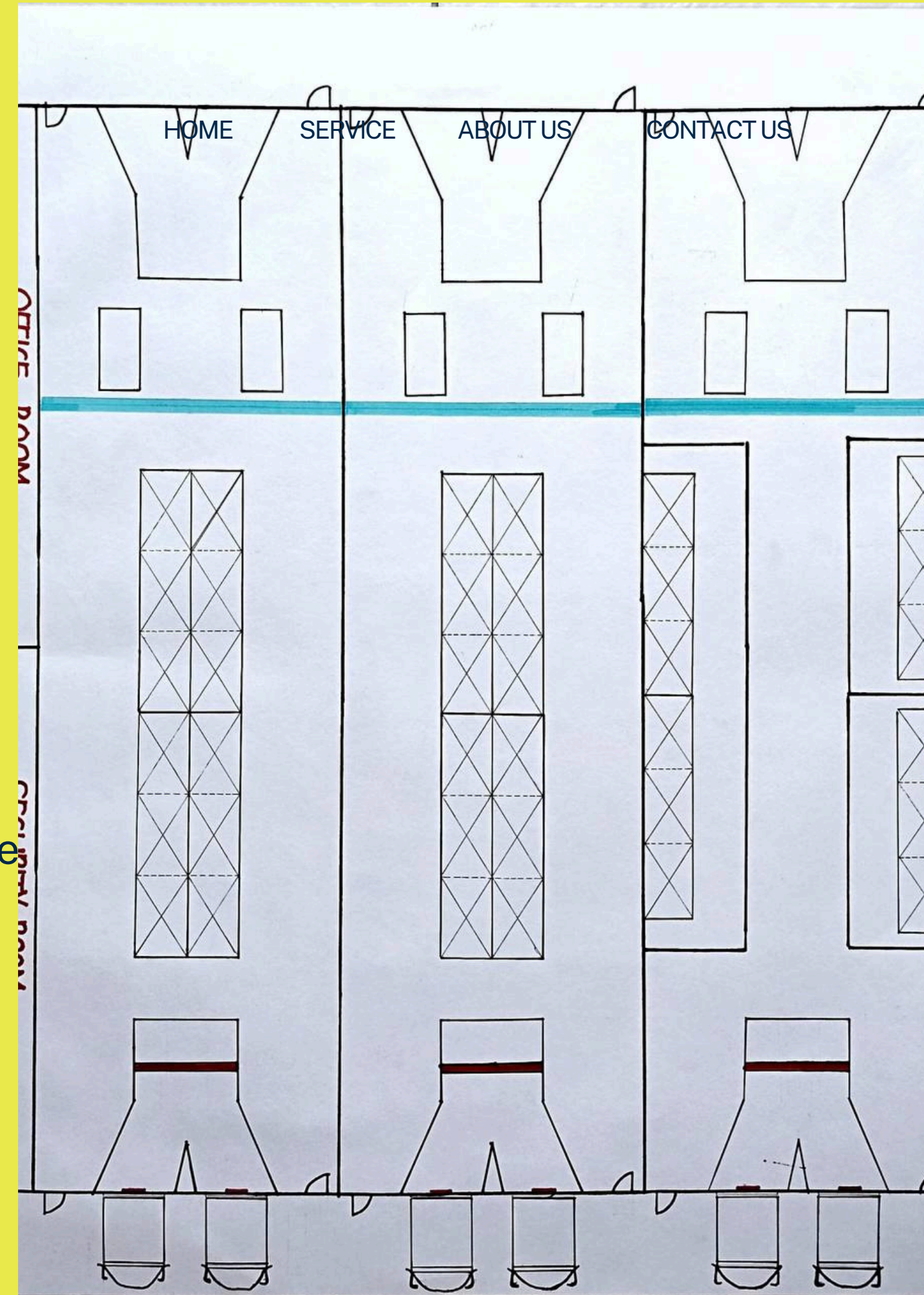
- 1) RFID
- 2) SPEC SCANNER

## MACHINES

- 1) EV machines such as forklift, four wheel,
- 2) solar panel
- 3) door sensors

## SAFETY

- 1) tag / id face workers





# SUSTAINABILITY

- Solar Panels on the roof to reduce energy dependency.
- Rainwater Harvesting Systems for facility cleaning and landscaping irrigation.
- Electric Vehicle (EV) Charging Stations for trucks and employee vehicles.





Salford & Co.

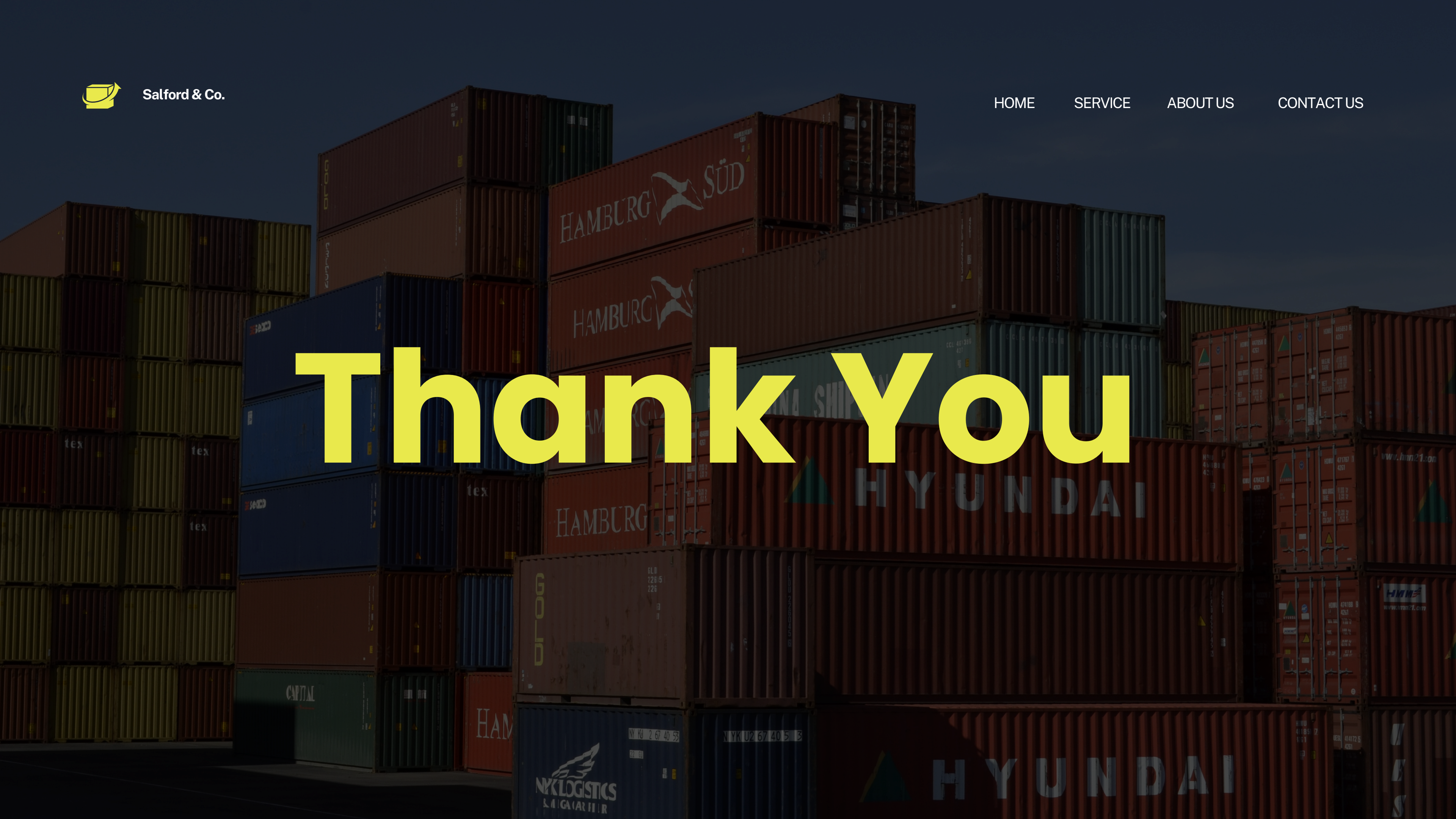
[HOME](#)


[SERVICE](#)

[ABOUT US](#)

[CONTACT US](#)

# Thank You



A meme featuring a man in a suit and sunglasses holding a gun, with the text '\$000000' at the top and 'ANY QUESTIONS?' at the bottom.

**\$000000**

**ANY QUESTIONS?**