

INTIFADA'

WAREHOUSES

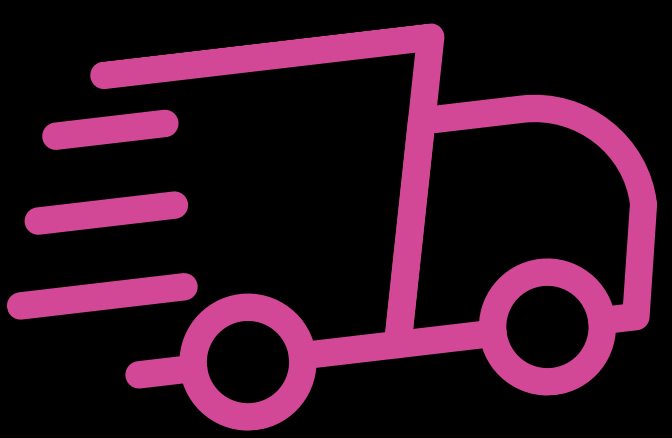


INTRODUCTION

PROVIDES STORAGE AND DISTRIBUTION SERVICES SPECIFICALLY FOR BRANDED GOODS, WITH A STRONG FOCUS ON THE FASHION INDUSTRY.

WHO ARE WE? WHAT DO WE OFFER?

- **We offer storage and distribution services for branded clothing, prioritizing premium and exclusive brands.**
- **Our clients include Nike, Balenciaga, Gucci, Gene Martino, and other brands of similar standing in the fashion industry.**
- **We ensure that all items are stored securely and distributed efficiently, in line with luxury brand standards.**

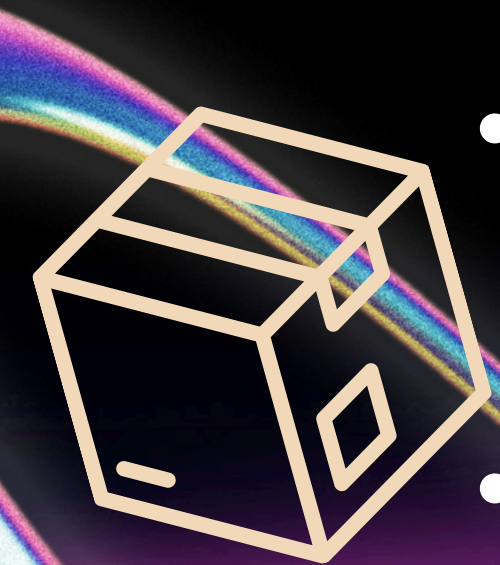


WAREHOUSE CONCEPT

WAREHOUSE LAYOUT : U-SHAPE MODEL

WHY CHOOSE THE U-SHAPE LAYOUT?

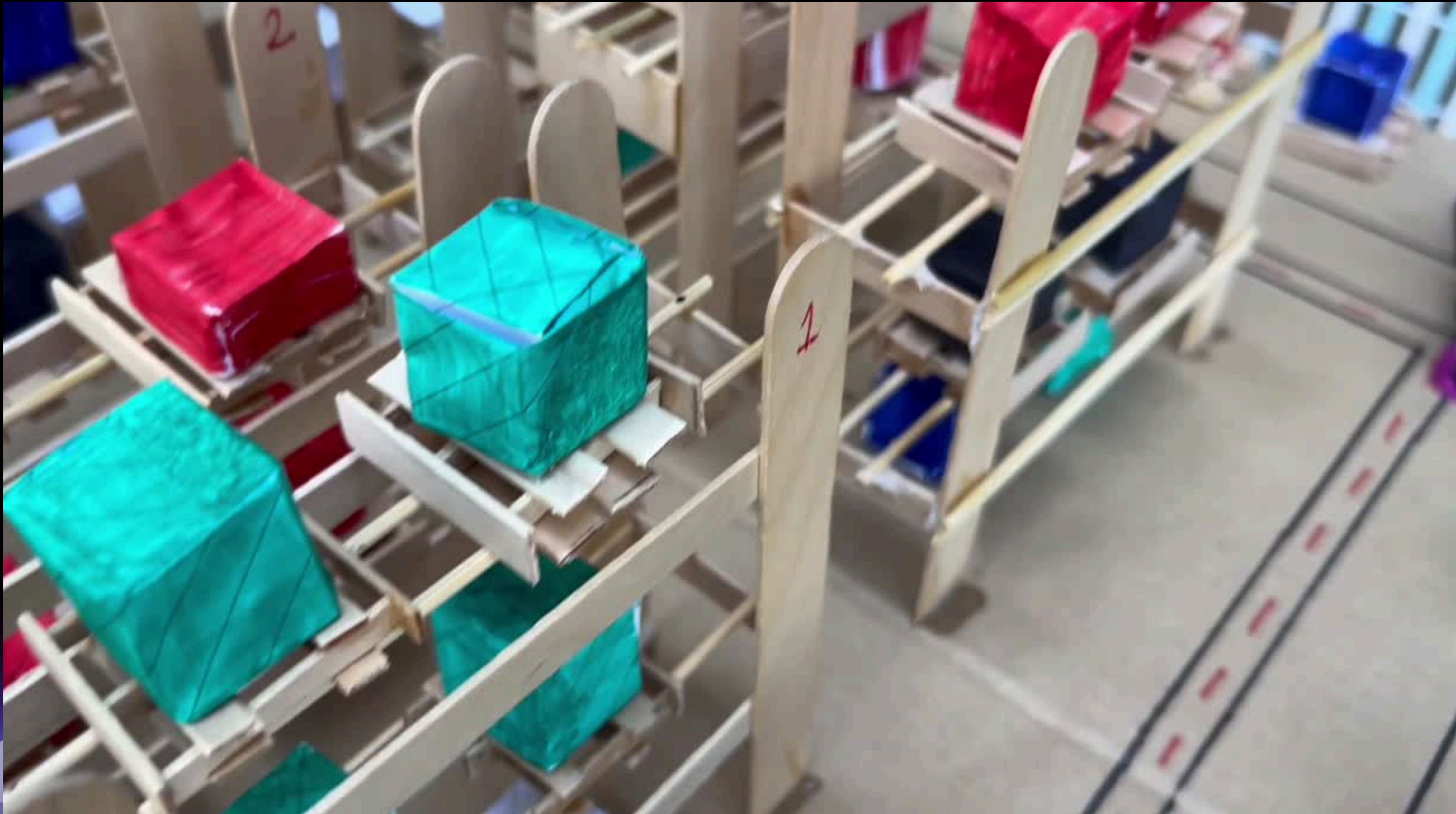
- **Optimal space utilization** : The central area is used for storage, while the sides are designated for loading and unloading activities.
- **Efficient workflow** : Inbound and outbound operations are separated yet within the same area, ensuring a smooth logistics flow.
- **Easy supervision** : A systematic layout makes it easier to monitor stock movement and inventory management



LAYOUT INTIFADA' WAREHOUSE



LAYOUT INTIFADA' WAREHOUSE





IMPLEMENTED SDG'S

(Sustainable Development Goals)



SDG 8 – DECENT WORK AND ECONOMIC GROWTH

- Enhancing warehouse efficiency through automation & augmented reality to drive productivity.
- Ensuring fair wages and a safe, conducive working environment for warehouse employees

SDG 6 – CLEAN WATER AND SANITATION

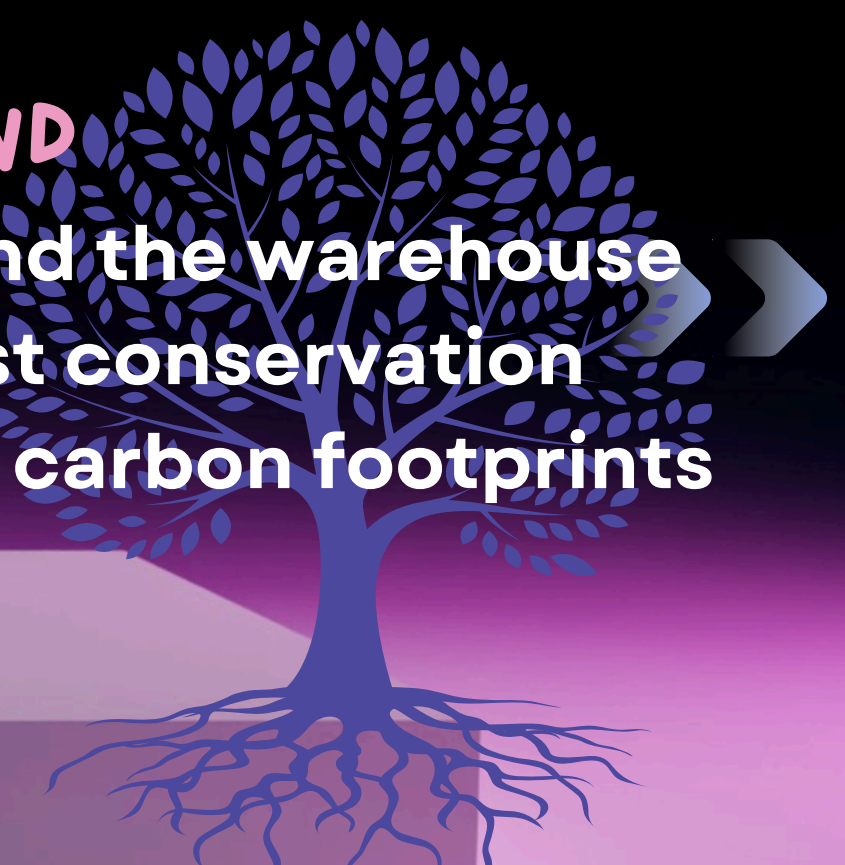
- Installing a rainwater harvesting system to collect and filter water for non-drinking purposes (e.g., toilets and plant irrigation).
- Using water treatment systems to ensure safe and sustainable water reuse.
- Minimizing water wastage in warehouse operations.

SDG 9 – INDUSTRY, INNOVATION, AND INFRASTRUCTURE

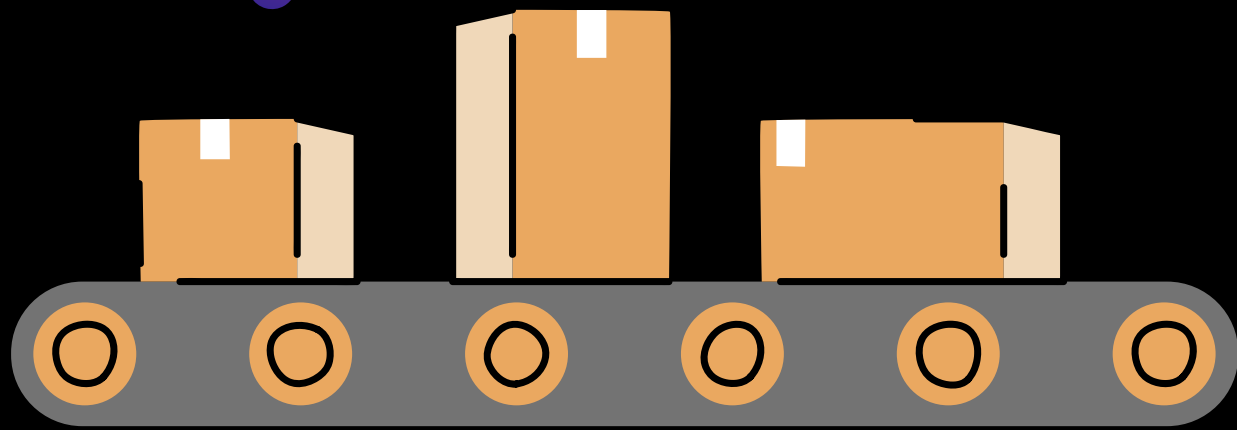
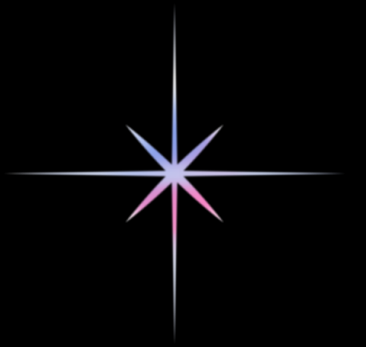
- Digitalization & E-Commerce (SDG 9.2 – Inclusive & Sustainable Industrialization)
- Providing an online sales & inventory tracking system, allowing customers to access stock information in real-time

SDG 15 – LIFE ON LAND

- Tree planting around the warehouse or supporting forest conservation programs to offset carbon footprints

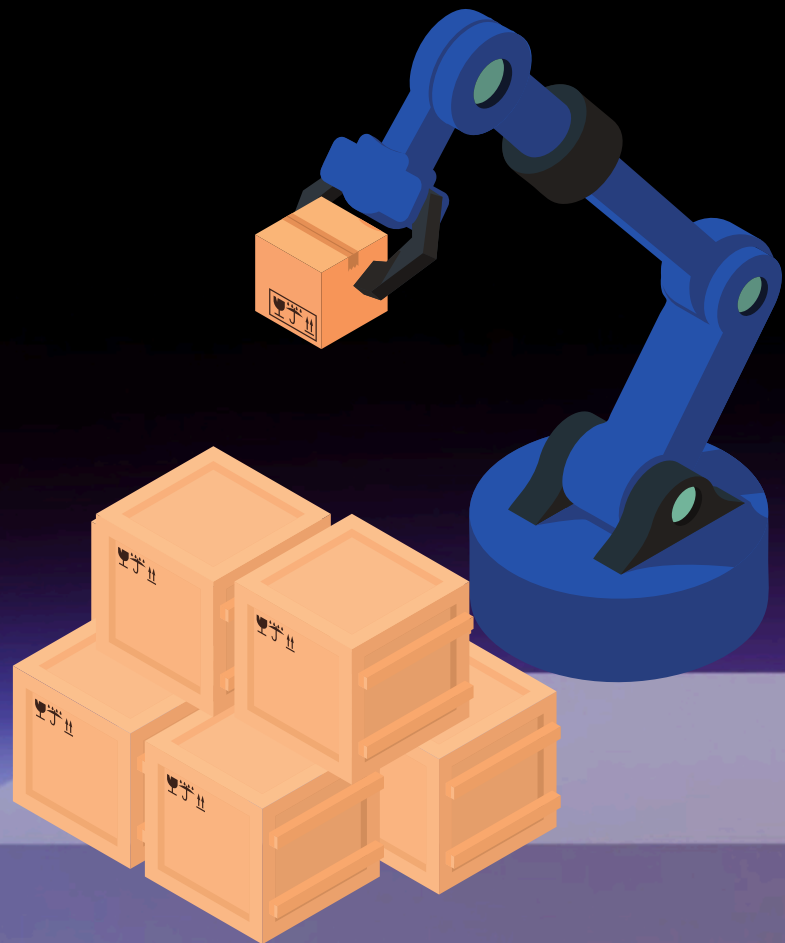


TECHNOLOGY USED IN WAREHOUSES



CONVEYOR SYSTEMS

- Automate material handling by transporting goods efficiently.
- Reduces manual labor and improves workflow speed.



ROBOTIC SYSTEMS – AUTOMATED STORAGE & RETRIEVAL SYSTEMS (AS/RS)

page 04

- Robots handle stock placement and retrieval with precision.
- Enhances efficiency, reduces errors, and optimizes space utilization.



TECHNOLOGY USED IN WAREHOUSES



SMART SENSORS & IOT INTEGRATION

- Monitors inventory levels, movement, and environmental conditions.
- Enables real-time tracking and predictive maintenance.

ARTIFICIAL INTELLIGENCE & MACHINE LEARNING

- AI-driven systems optimize inventory management and order fulfillment.
- Predictive analytics improve demand forecasting and warehouse efficiency.



TECHNOLOGY USED IN WAREHOUSES



AUTOMATED GUIDED VEHICLES (AGVs)

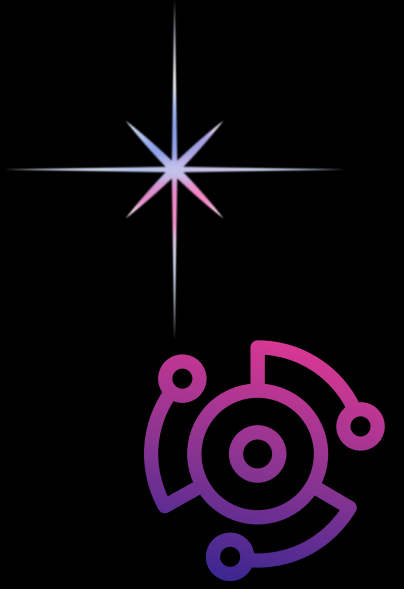
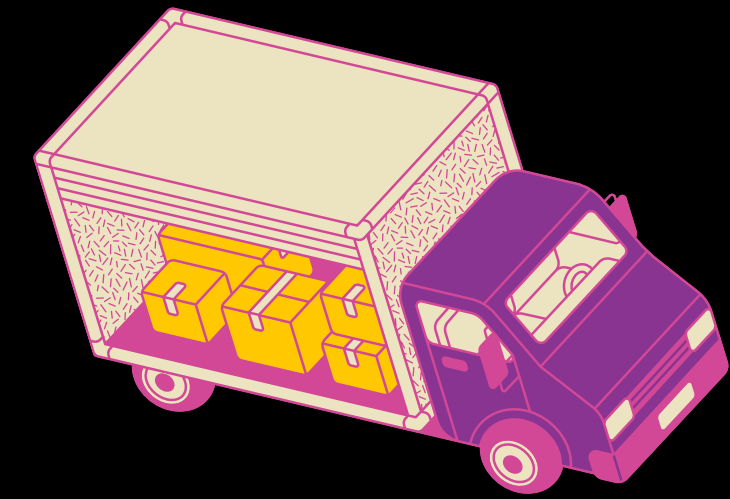
- Faster Transport – AGVs move stock automatically, reducing manual work.
- Safer & Smarter – Sensors prevent collisions, ensuring smooth operations

AR SMART GLASSES



- Faster & Accurate Picking – AR glasses provide real-time guidance, reducing search time and errors with hands-free scanning.
- Sync with RFID & WMS for real-time stock updates and warn of hazards or emergencies.

RESOURCES IN WAREHOUSES



Physical Resources

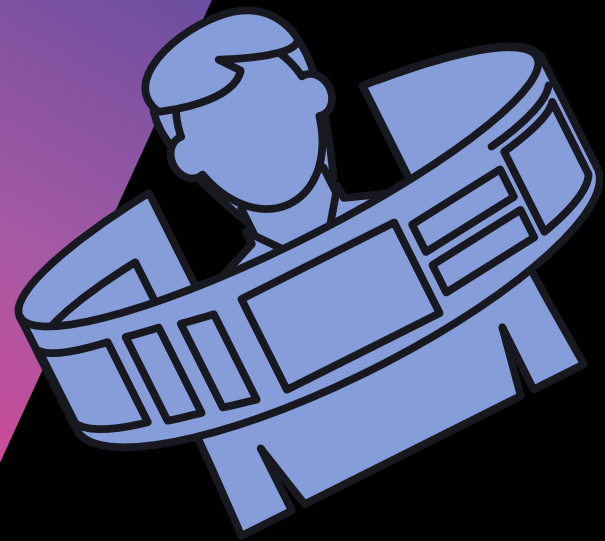
BUILDING & INFRASTRUCTURE

- Spacious and clean storage area for branded and luxury clothing.
- Inbound & outbound sections for receiving and shipping goods.
- Ventilation & temperature control systems, especially for delicate clothing items.

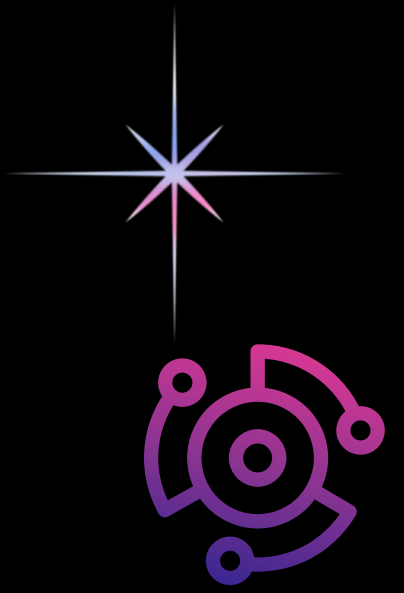
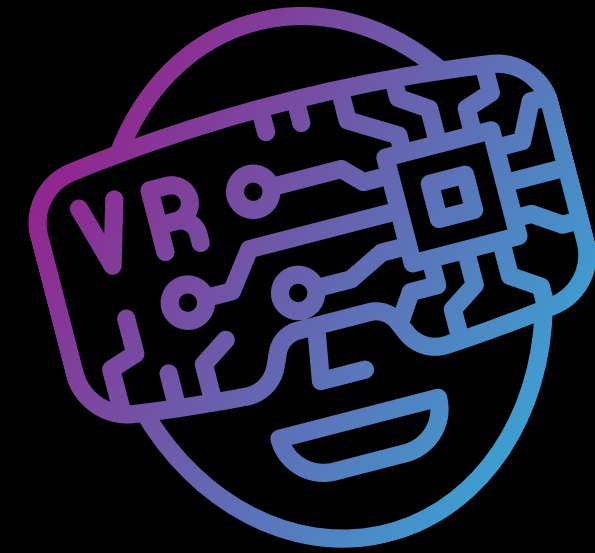
WAREHOUSE EQUIPMENT & FURNITURE

- Racks & shelving systems – Organizing clothes by category and brand.
- Pallets & bins – Arranging stock neatly and accessibly.
- Worktables & packing stations – For processing, inspecting, and packing clothes before delivery.





RESOURCES IN WAREHOUSES



Technology Resources

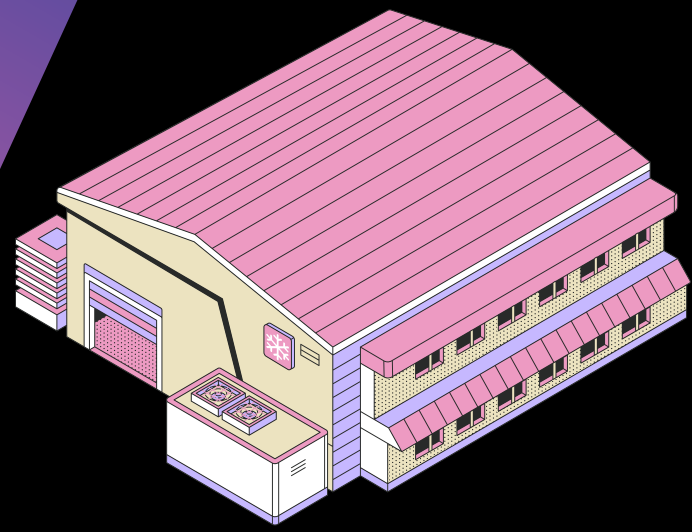
BARCODE SCANNERS & RFID (RADIO FREQUENCY IDENTIFICATION)

- Used for automated stock tracking without manual inspection.
- Reduces human error by automating stock counts and updating inventory in real-time.
- Help track and ensuring items are not misplaced or stolen.
 - If an item leaves the warehouse without authorization, RFID can trigger an alarm or alert.

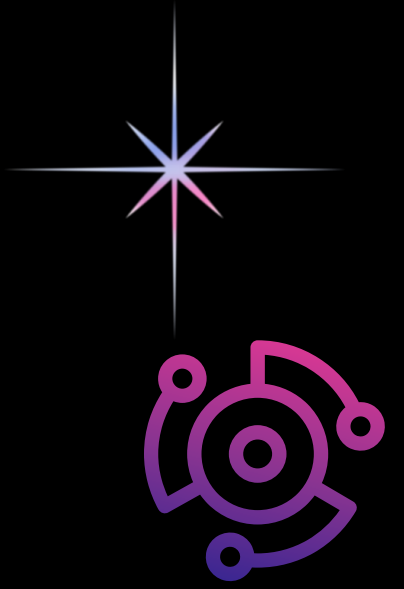
AUGMENTED REALITY GLASSES

- Enhancing Operational Efficiency – Real-Time Picking Assistance:
- Displays order details, item locations, and picking routes in real-time.
- Reduces search time and minimizes picking errors





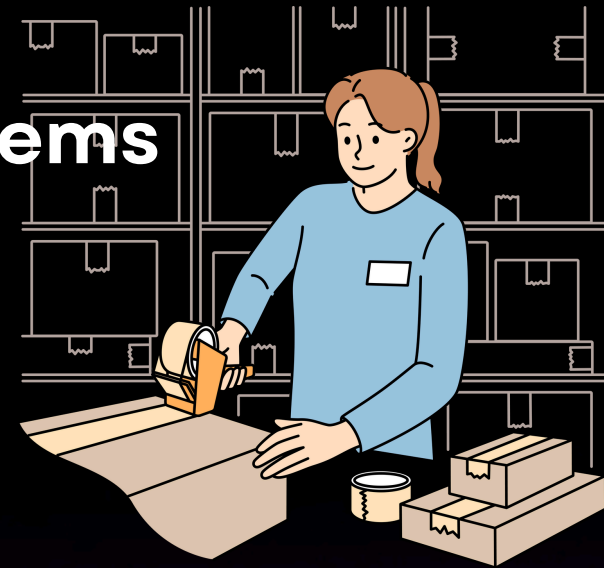
RESOURCES IN WAREHOUSES



Human Resources

WAREHOUSE WORKERS

- Responsible for sorting, inspecting, and packing clothing.
- Pack and label clothing items accurately for dispatch.



DRIVERS (TRANSPORTATION & DELIVERY)

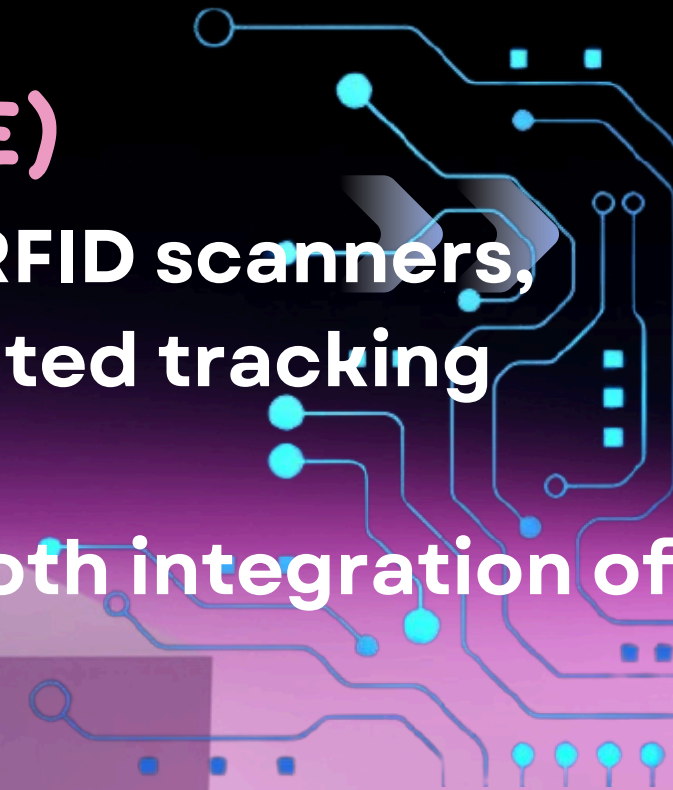
- Deliver clothing orders from the warehouse to retail stores, boutiques, or clients.
- Ensure timely and safe transportation of goods

WAREHOUSE SUPERVISORS

- Oversee daily operations and ensure workflow efficiency.
- Ensure compliance with safety regulations and standard operating procedures (SOPs).

IT TECHNICIANS (MAINTENANCE)

- Oversee the functionality of RFID scanners, barcode systems, and automated tracking software.
- Ensure data security and smooth integration of digital tools



THANK YOU!



